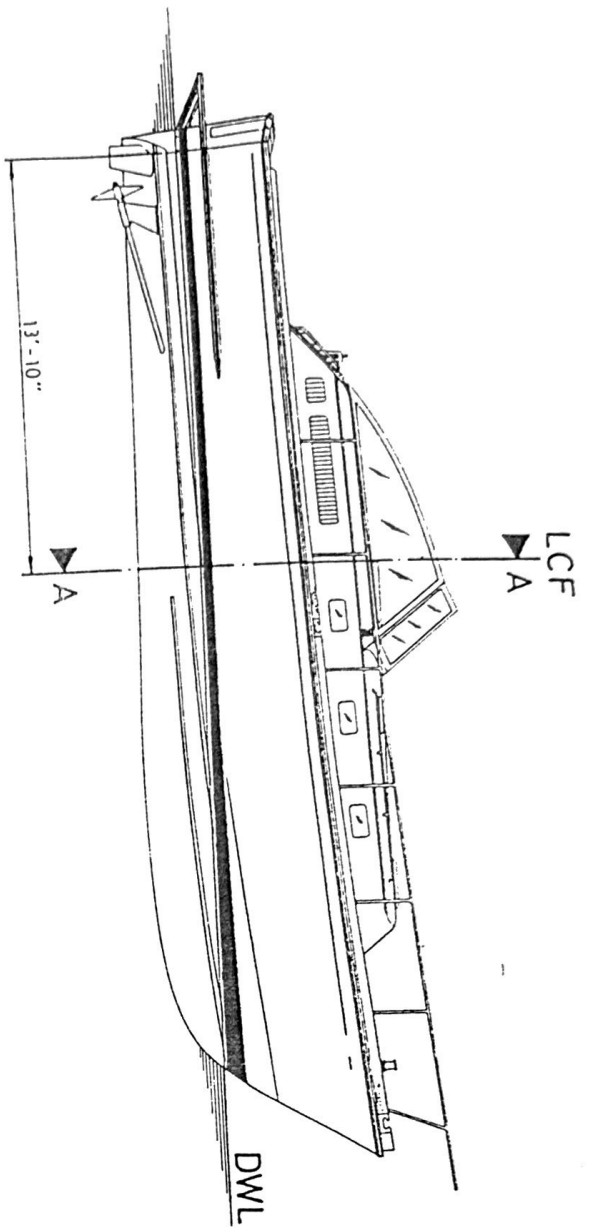
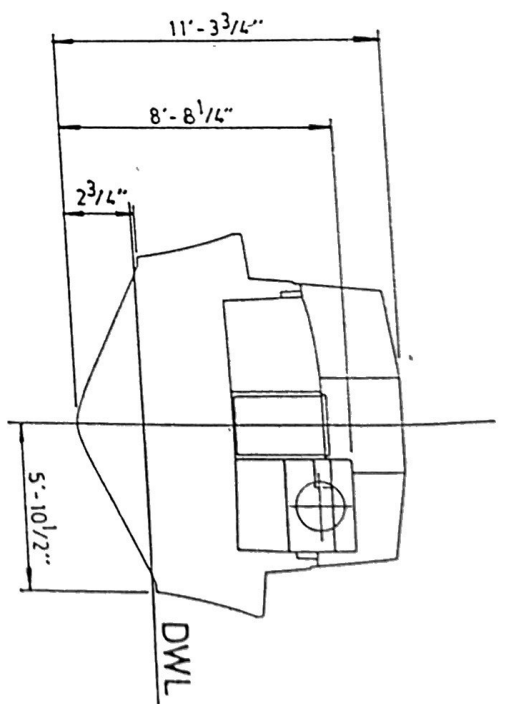


EB 38 GRAVING PLAN

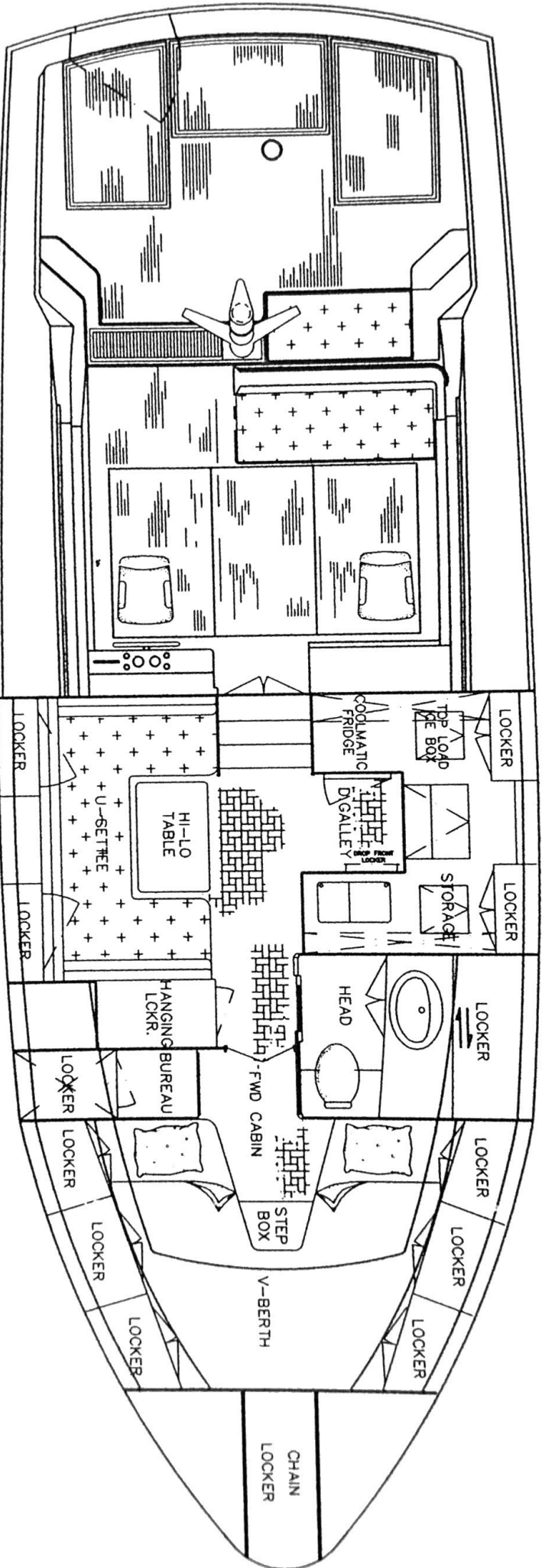


SECTION A-A



38 EASTBAY ARRANGEMENT PLAN LAYOUT

38#0088





CE TYPE EXAMINATION CERTIFICATE
N°. DIP76996 dated 26/11/1997
Enclosure - Page 1 of 1

“ EAST BAY 38 “

Builder: **GRAND BANKS YACHTS**

Place: **SDN BHD MALAYSIA**

Length	(Lh)	11,57	(m)
Beam	(Bh)	4,01	(m)
Depth	(Ds)	1,89	(m)
Displacement	(Md)	11,61	(t)

Material of the hull	FRP
Propulsion	POWERED
Steering control	REMOTE

Number of sailmasts : //

Sail surface : //

Engines:	Type of engines	INBOARD DIESEL
	Maximum power	280 KW x 2
	Number of engines	2

Maximum n° of persons permitted on board **8**

Maximum Load (including all persons) **1670 KG ***

Design category **B**

Notes :

Approved technical file completed on 12/03/1997

* Including fuel and water

